



SCA Public Issues Committee Minutes November 2, 2011 – 7:00 PM Renton City Hall

	<ul style="list-style-type: none"> ▪ Welcome, Roll Call and Introduction of Guests PIC Chair, Sonny Putter, called the meeting to order at 7:03 p.m. 24 cities were represented (Attachment 1 to these minutes). Guests included Robin Mayhew, Puget Sound Regional Council; Alon Bassok, Puget Sound Regional Council; Stacy Trussler, WSDOT.
MSP	<ul style="list-style-type: none"> ▪ Approval of Minutes To approve the minutes of the October 12, 2011 meeting of the PIC.
	<ul style="list-style-type: none"> ▪ Feedback on PSRC Transportation 2040 Prioritization Study Session Monica Whitman introduced Robin Mayhew, Transportation Planning Program Manager for the Puget Sound Regional Council (PSRC), and Alon Bassok, Data Systems and Analysis Senior Planner for the PSRC. Robin and Alon gave a presentation and provided handouts on PSRC’s Transportation 2040 (T2040) Prioritization, including the October 26, 2011 T2040 Prioritization Decision Guide Draft Recommendation Executive Summary and a printed presentation of slides to provide overview and explanation of the process as well as a timeline of future steps. Members were encouraged to review the full copy of the T2040 Prioritization Decision Guide, www.psrc.org/about/advisory/t2040pwg/. Attendees were given an opportunity to express concerns during the Q&A.
MSP	<ul style="list-style-type: none"> ▪ Action Items <ol style="list-style-type: none"> 1. Statewide Initiative 1183 To table the recommendation to the SCA Board of Directors that SCA support the passage of Statewide Initiative 1183. Motion passed unanimously. Pete Lewis circulated a sample resolution that the City of Auburn has adopted. 2. Transportation 2040 Prioritization Guiding Principles The original motion was as follows: To recommend to the SCA Board of Directors that SCA support Transportation 2040 (T2040) Prioritization in accordance with the following guiding principles. T2040 Prioritization should include: <ol style="list-style-type: none"> a. Separate investment categories that prioritize like investments against like investments (i.e. bicycle/pedestrian/complete streets is its own category); b. Overarching measures that are used within each category to assess a project’s likelihood of furthering a desired outcome (i.e. jobs – this measure considers the extent to which projects support businesses and job creation); c. Addressing maintenance, preservation and operations beginning with an inventory of the existing conditions of the Regional Transportation Network. <p>There was a motion made to amend the original motion as follows:</p> <ol style="list-style-type: none"> d. That the Prioritization process not move forward, to the General Assembly, until there is agreement on the criteria to prioritize projects. <p>Motion passed, 21 yes votes and 3 no votes.</p> <p>There was a second motion made as follows:</p> <ol style="list-style-type: none"> e. Any crosscheck with regional growth trends must use updated population and employment forecasts rather than aspirational targets used in the Vision 2040 and Transportation 2040 plans. <p>Motion passed unanimously.</p> <p>Vote on the original motion as amended:</p>
MSP	<p>To recommend to the SCA Board of Directors that SCA support Transportation 2040 (T2040) Prioritization in accordance with the following guiding principles. T2040 Prioritization should include:</p>

- a. Separate investment categories that prioritize like investments against like investments (i.e. bicycle/pedestrian/complete streets is its own category);
- b. Overarching measures that are used within each category to assess a project's likelihood of furthering a desired outcome (i.e. jobs – this measure considers the extent to which projects support businesses and job creation);
- c. Addressing maintenance, preservation and operations beginning with an inventory of the existing conditions of the Regional Transportation Network;
- d. That the Prioritization process not move forward, to the General Assembly, until there is agreement on the criteria to prioritize projects;
- e. Any crosscheck with regional growth trends must use updated population and employment forecasts rather than aspirational targets used in 2040 work plans.

Motion passed unanimously.

MSP

3. Service Improvement Plan of the Veterans Services Levy

To recommend to the SCA Board of Directors that SCA support continuity of services pursuant to adoption of the Service Improvement Plan (SIP) to guide the goals and investments of the Veterans and Human Services Levy for the next six years.

Motion passed unanimously.

▪ **Presentations/Updates**

1. City of Auburn Animal Control Update

Pete Lewis gave an update on the City of Auburn's status of Animal Control. The City of Auburn has decided to opt out of the contract with King County for Animal Control Services when it expires. A group of veterinarians formed a nonprofit organization, Auburn Valley Humane Society, which has a governing Board of Directors, bylaws, and an approved budget. The dollars not being paid by Auburn will unfortunately increase other city contracts with King County. He encouraged cities to look at alternative ways to address Animal Control Services. Pete also acknowledged that the King County Animal Control Officers are very good at their jobs; however, there are not enough officers to service King County.

Several members stated that their cities have already opted out of their contracts with King County, or would like to in the future. Members also shared concerns of response time and reasonable service for the fees paid to King County for Animal Control Services.

2. Regional Economic Strategies Update (EDDB)

Linda Kochmar provided an update on the work of the Puget Sound Regional Council (PSRC) Economic Development District Board (EDDB) Regional Economic Strategies. There is major competition for global investments among regions like the Puget Sound. The Regional Economic Strategies help identify the region's strengths in terms of talent and build on those strengths to attract jobs and investors to our region. See Attachment 2 to these minutes.

The ongoing work of the Economic Development District Board updating the Regional Economic Strategy can be found at <http://www.psrc.org/econdev/res>.

3. 2012-2017 Budget Recommendations (KCFCDAC)

Bob Lee gave a presentation on the work of the King County Flood Control District Advisory Committee (KCFCDAC) concerning its 2012-2017 Budget Recommendations. The KCFCDAC submitted recommendations to the King County Flood Control District Board of Supervisors to help shape the 2012 proposed budget. The KCFCDAC supported the capital project list for 2012-2017, subject to the ability to fund the project list without long-term borrowing and short-term borrowing was viewed by most to be reasonable. It did not support District funds for a river safety outreach and education program. The proposed budget includes funding for six new full time staff members; one of the staff is a policy analyst and should be budgeted for 2012 only. The KCFCDAC was unanimous in the recommendation that costs related to a legal settlement that pre-dates the formation of the Flood Control District should not be borne by the District. Those costs will be covered by King County's General Fund. It also recommended that the Flood Hazard Management Plan Update process include the development of a policy on coastal flooding. King County Councilmember Reagan Dunn recently added an additional \$300,000 under the flood emergency contingency project for flooding near the Cedar River caused by increased runoff from Lake Francis. This addition is proposed to be subject to approval of a project scope by the Flood District's Executive Committee. The KCFCDAC did not consider Councilmember Dunn's recommendation. This adjustment would reduce the overall fund balance from \$7.2M to \$6.9M in 2012. Recently, more information has become available concerning the cost of the Seattle Seawall project. Follow this link to Publicola for more information, <http://publicola.com/2011/10/28/new-seawall-cost-estimate-56-million-over-mcginn-prediction/>.

	<p>4. Year End Report (JRC)</p> <p>Ava Frisinger provided a year-end report on the work of the Joint Recommendations Committee (JRC). The JRC functions as a consortium between King County and member cities for Community Development Block Grant (CDBG) funds and federal funds. King County receives approximately \$10M-\$12M of federal funds and about \$3M Regional Affordable Housing Program (RAHP) funds each year. These funds are used for affordable housing projects to ensure that housing will be available. For more information and a list of projects awarded for 2012, see Attachment 3 to these minutes.</p>
<p>MSP</p> <p>MSP</p> <p>MSP</p>	<p>▪ Reports</p> <p>Chair's Report</p> <p>Sonny Putter gave a report acknowledging the contributions of the PIC in 2011.</p> <ul style="list-style-type: none"> • Thirty-three member cities attended monthly PIC meetings with an average attendance of 26 cities. • Two study sessions before PIC provided detailed information on the Brightwater Treatment Plant and Metro Strategic Plan. • The PIC recommended individuals for appointment to 133 seats on 28 regional committees and boards for 2011. SCA's positions prevailed in the adoption of King County Metro Transit Strategic Plan for Public Transportation 2011-2021. This massive effort included more than 45 hours of meetings for the SCA-RTC Caucus in 2011, alone. • SCA's adopted Guiding Principles for the South Central Action Area Caucus Group emphasized collaboration with local governments as well as preventing policies that will force cities to adopt more stringent regulations. The principles will help guide the near-term actions, which will address the Puget Sound Partnership agenda. • Consistent with Guiding Principles adopted by SCA in 2010, SCA successfully supported the 2011 update of the Countywide Planning Policies, approved by the GMPC in September 2011, with one issue set aside for further study. • SCA supported the 2012 Local Hazardous Waste Management Rate Increase, a rate that was approved by Metropolitan King County Council in 2011. • SCA successfully pursued amendments to the King County Emergency Management Ordinance to clarify responsibility during events of regional significance. The amendments were approved by the Metropolitan King County Council in 2011. • SCA initiated amendments the King County Emergency Management Ordinance to allow one alternate to be appointed for each member of the Emergency Management Advisory Committee, with the amendment approved by the Metropolitan King County Council in 2011. • SCA was successful in its efforts to secure one additional seat and one alternate on the PSRC Transportation Policy Board, the PSRC Growth Management Policy Board, and the PSRC Project Evaluation Committee. • SCA successfully supported the use of domestic violence protection order checklists. Such checklists have been developed and training on the availability and use of such checklists is occurring across King County in 2011. <p>Sonny also reported that the PIC provided early support of the Human Services and Veterans Levy renewal. He thanked the members of the PIC for their efforts.</p> <p>Executive Director's Report</p> <p>Deanna Dawson reported that she is excited to come into a highly functioning organization with great members and staff. She gave a brief background that she has been an Edmonds City Councilmember, Executive Director to Snohomish County Executive Reardon, and involved with the Brightwater Siting Committee. Deanna provided a matrix illustrating liquor revenues to cities under 4 conditions. Deanna welcomed suggestions and encouraged members to contact her.</p> <p>PIC Nominating Committee Recommendations</p> <p>Jim Haggerton thanked the members of the PIC Nominating Committee and staff for their diligent work on the recommendations for the 2012 Regional Boards and Committees. The PIC Nominating Committee tried to balance the recommendations geographically and took into consideration city size. See Attachment 4 to these minutes.</p> <p>To recommend to the SCA Public Issues Committee that it recommend to the SCA Board of Directors the attached list of appointments to regional boards and committees for 2012.</p> <p>Motion passed unanimously.</p> <p>To recommend to the SCA Public Issues Committee that Mia Gregerson serve as Chair of the PIC and Hank Margeson serve as Vice-chair of the PIC for 2012.</p> <p>Motion passed unanimously.</p> <p>To recommend to the SCA Public Issues Committee that in the event an incumbent recommended for a seat on a regional board or committee fails to secure re-election or due to individual preferences, that the PIC Nominating Committee be permitted to recommend a substitute directly to the SCA Board of Directors.</p> <p>Motion passed unanimously.</p>

	<p>Members thanked the PIC Nominating Committee for their work on the recommendations for the 2012 Regional Boards and Committees.</p>
<p>MSP</p>	<ul style="list-style-type: none"> ▪ <u>For the Good of the Order</u> <ol style="list-style-type: none"> 1. David Baker thanked Mayor Dave Hutchinson and Councilmember Sonny Putter for their years of service and involvement with SCA. 2. Don Gerend also thanked Mayor Dave Hutchinson and Councilmember Sonny Putter. He also announced that there has been a letter to the Governor circulating, which 115 mayors in the state have signed, addressing the Governor's proposed budget cuts related to liquor revenues after she promised not to make any cuts to cities. He encouraged all mayors to review the letter and consider adding their signature. 3. Suzette Cooke inquired about Member Emeritus status for SCA members who have provided many years of service. Sonny Putter announced that SCA does have Member Emeritus status and at the last meeting of the SCA Board of Directors, the Board voted to recognize Mayor Dave Hutchinson, Councilmember Ralph Shape, and Councilmember Sonny Putter. 4. Tola Marts announced that Issaquah Councilmember Maureen McCarry has been stricken with Amyotrophic Lateral Sclerosis (ALS). He invited members to attend the formal dedication of the McCarry Woods on Saturday, November 12, 2011 at 10:00 a.m. More information can be found on the City of Issaquah's website, http://www.ci.issaquah.wa.us/News.asp?NewsID=2316. 5. Pete Lewis announced that the City of Auburn is hosting the 46th Annual Veterans Day Parade and Observance on Saturday, November 5, 2011 at 11:00 a.m. More information can be found on the City of Auburn's website, http://www.auburnwa.gov/government/calendars/community/46_vdp_s_p6875.asp?EventMode=View&EventOccurrence=0. 6. To cancel the December 14, 2011 meeting of the PIC. <p>Motion passed unanimously.</p> <ol style="list-style-type: none"> 7. Amy Ockerlander requested that if any information is available, especially concerning the legislative session, prior to the January meeting of the PIC that it be sent to members of the PIC for council discussion. 8. SCA Annual Business Meeting and Networking Dinner – November 16, 2011 – 5:30 p.m., Embassy Suites, Tukwila. 9. SCA Regional Caucus Meetings to elect SCA Board of Directors (Wine & Cheese Event): <ul style="list-style-type: none"> • North and Snoqualmie Valley Caucus Meeting – December 7, 2011 – 6:30 p.m. Wine & Cheese Reception with 7:00 p.m. Meeting, Kirkland Performance Center, Lobby. • South and South Valley Caucus Meeting – December 14, 2011 - 6:30 p.m. Wine & Cheese Reception; 7:00 p.m. Meeting, Kent Senior Center, Room 9. 10. SCA All Caucus Orientation – January 4, 2012 – 6:00 p.m. Light Dinner Served; 6:30 p.m. Meeting, SeaTac City Hall Council Chambers.
	<ul style="list-style-type: none"> ▪ <u>Adjourn</u> <p>The meeting was adjourned at 8:34 p.m. Sonny commented that it has been a pleasure and honor to serve as chair for 2011 and thanked the members of the PIC.</p>

AFIS – Automated Fingerprint Identification System
BoH – Board of Health
RTC – Regional Transit Committee
CEH – Committee to End Homelessness in King County
CPPs – Countywide Planning Policies
EDDB – PSRC's Economic Development District Board
ETP – Eastside Transportation Partnership
GMA – Growth Management Act
GMPB – PSRC's Growth Management Policy Board
GMPC – Growth Management Policy Committee
KCD – King Conservation District
KCPEC – King County Project Evaluation Committee
KCFDAC – King County Flood Control District Advisory Committee
LEOFF 1 – Law Enforcement Officers and Fire Fighters Disability Board
LHWMP – Local Hazardous Waste Management Program
MIDD – Mental Illness and Drug Dependency Plan
MKCC – Metropolitan King County Council
MPP – Multi-county Planning Policies
MSWMAC – Metropolitan SW Management Advisory Committee

MVET – Motor Vehicles Excise Tax
PAA – Potential Annexation Area
PIC – Public Issues Committee
PSRC – Puget Sound Regional Council
REET – Real Estate Excise Tax
REPC – Radio Executive Policy Committee
RPEC – PSRC Regional Project Evaluation Committee
RLSJ – Regional Law Safety and Justice Committee
RTTF – Regional Transit Task Force
RWQC – Regional Water Quality Committee
SCA – Suburban Cities Association
SCAACG – South Central Action Area Caucus Group
SCATBd – South County Area Transportation Board
SeaShore – Seashore Transportation Forum
SWAC – Solid Waste Advisory Committee
TPB – PSRC's Transportation Policy Board
UGA – Urban Growth Area
WRIA – Water Resource Inventory Area (often called Watershed Resource Inventory Area and/or WIRA)

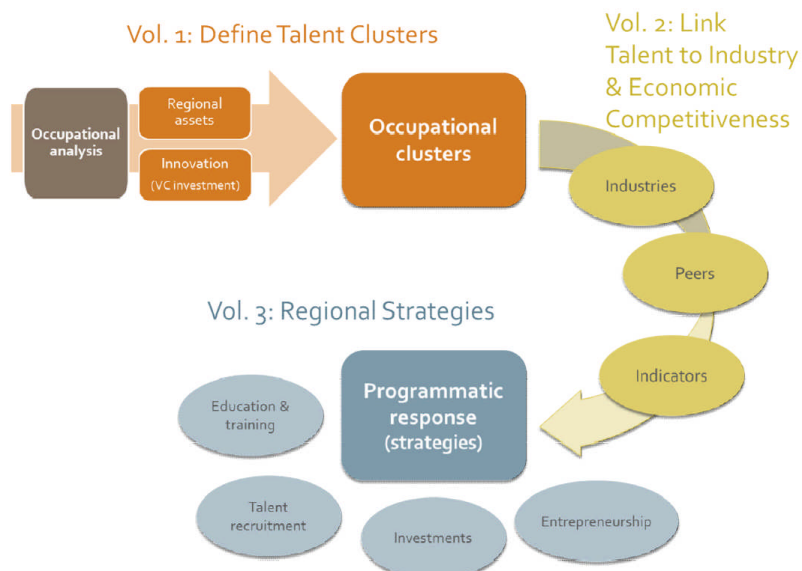
2011 Roll Call –Public Issues Committee Meeting November 2, 2011

City	Representative	Alternate	Other	Staff
Algona	Dave Hill	Lynda Osborn		
Auburn	Pete Lewis	Sue Singer		
Beaux Arts	Richard Leider			
Black Diamond	Rebecca Olness	Bill Boston		
Bothell	Tom Agnew	Patrick Ewing		
Burien	Brian Bennett	Jerry Robison		
Clyde Hill	Barre Seibert	George Martin		
Covington	Marlla Mhoon	Mark Lanza		
Des Moines	Matt Pina			
Duvall	Amy Ockerlander	Will Ibershof		
Enumclaw	Liz Reynolds			
Federal Way	Linda Kochmar	Jeanne Burbidge		
Hunts Point	Fred McConkey			
Issaquah	Tola Marts	John Traeger		
Kenmore	David Baker	Allan Van Ness		
Kent	Dennis Higgins	Suzette Cooke		
Kirkland	Amy Walen	Bob Sternoff		
Lake Forest Pk	Sandy Koppenol	Dave Hutchinson		
Maple Valley	Layne Barnes	Erin Weaver		
Milton	Bryan Ott			
Newcastle	Sonny Putter	Lisa Jensen		
Normandy Pk	Shawn McEvoy	Doug Osterman		
North Bend	Ross Loudenback	Ken Hearing		
Pacific	Leanne Guier	John Jones		
Redmond	Hank Margeson	Richard Cole		
Renton	King Parker	Denis Law		
Sammamish	Nancy Whitten	Tom Odell	Don Gerend	
SeaTac	Mia Gregerson	Tony Anderson		
Shoreline	Shari Winstead	Will Hall		
Skykomish	Henry Sladek			
Snoqualmie	Matt Larson	Kingston Wall		
Tukwila	Jim Haggerton	Kathy Hougardy		
Woodinville	Bernie Talmas			
SCA				Karen Goroski Monica Whitman Doreen Booth Kristy Burwell

Electeds present are highlighted in gray. Cities represented are **bolded**.

Handout 1 to the November 2, 2011 PIC Agenda

Overview of our approach



S:\PUBLIC ISSUES COMMITTEE\2011 PIC\November 2, 2011\Handout 1 - EDDB Regional Economic Strategies Update.pdf

Handout 1 to the November 2, 2011 PIC Agenda

Why an occupational approach?

- “Industries” don’t reveal the jobs people work at and the skills they possess.
- Skills are mobile across industries.
- We need to understand what makes the regional economy tick.
 - What makes our companies competitive?
 - What ensures their continued success?
 - What is the role of innovation?

S:\PUBLIC ISSUES COMMITTEE\2011 PIC\November 2, 2011\Handout 1 - EDDB Regional Economic Strategies Update.pdf

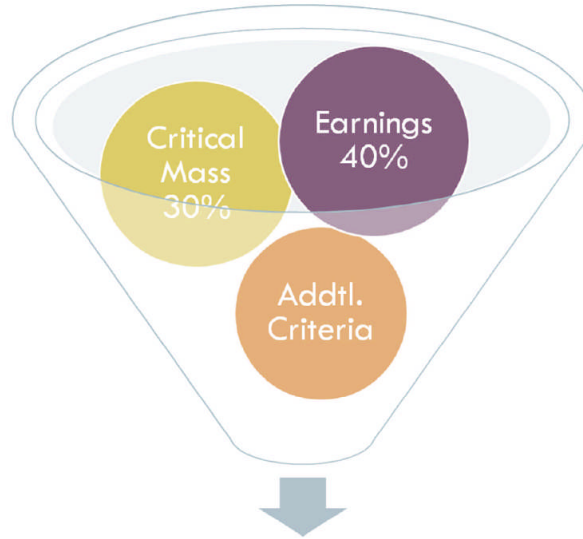
Handout 1 to the November 2, 2011 PIC Agenda

Review: Occupational “short-list”

OCCUPATIONAL ANALYSIS

8 criteria used to filter 751 occupations.

Must meet first two criteria to reach 75 point minimum.



Priority Occupations

S:\PUBLIC ISSUES COMMITTEE\2011 PIC\November 2, 2011\Handout 1 - EDDB Regional Economic Strategies Update.pdf

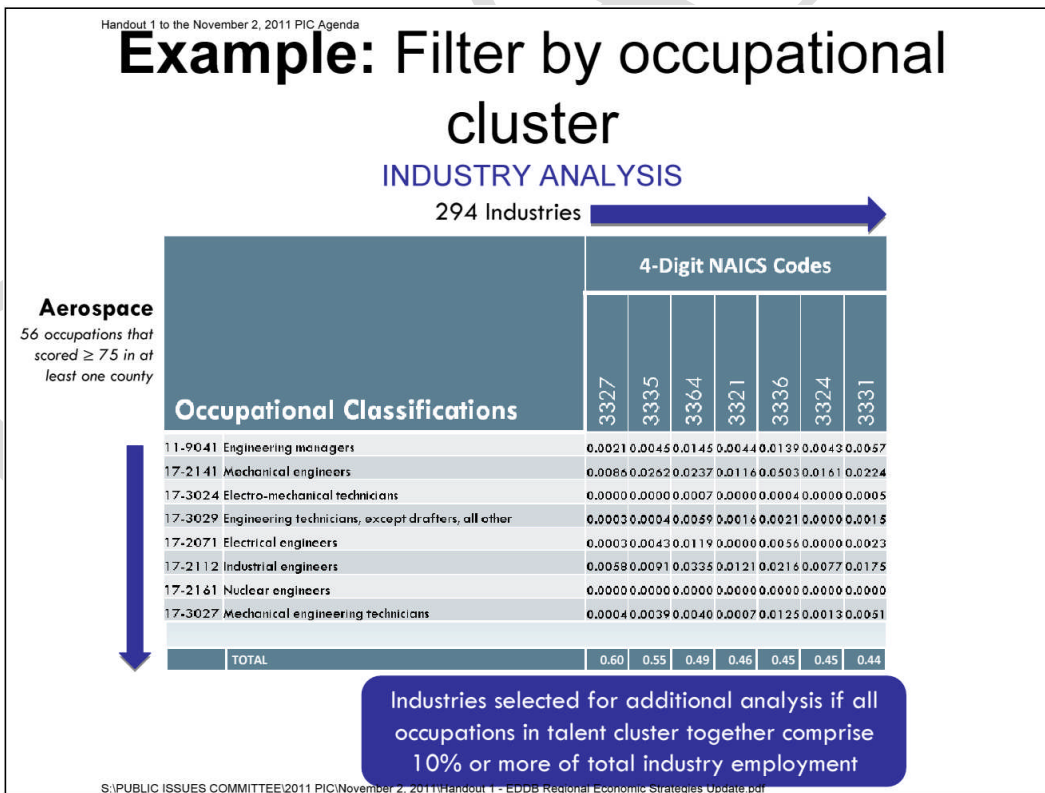
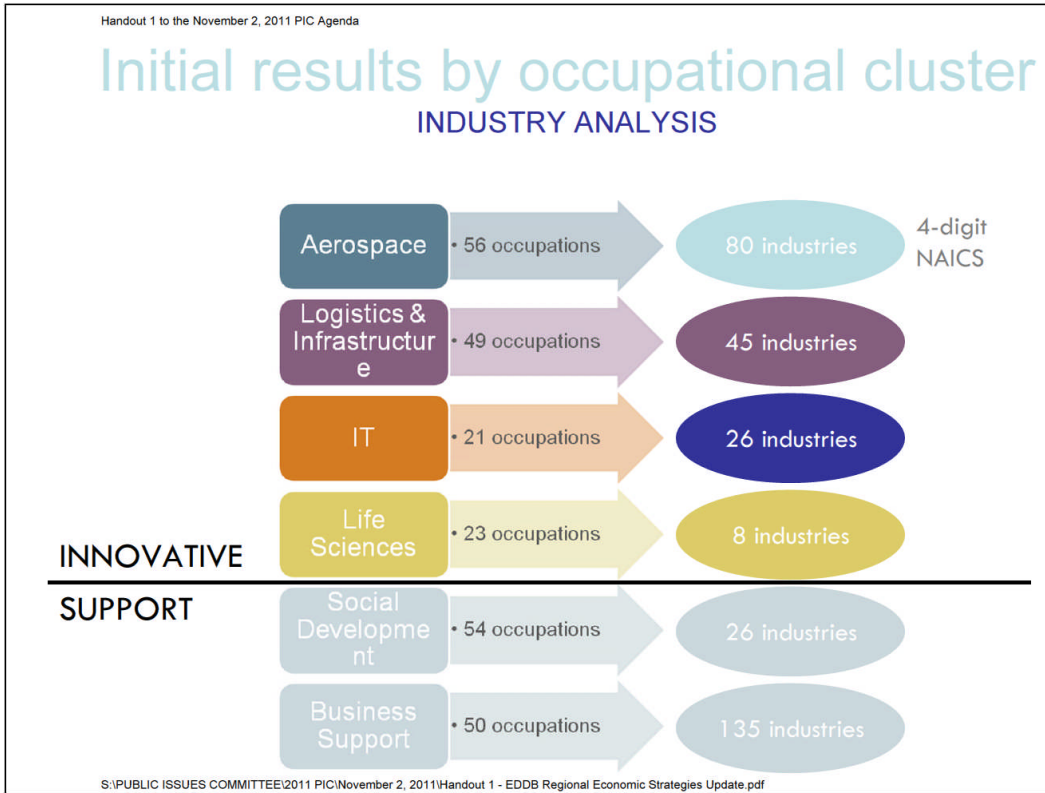
Handout 1 to the November 2, 2011 PIC Agenda

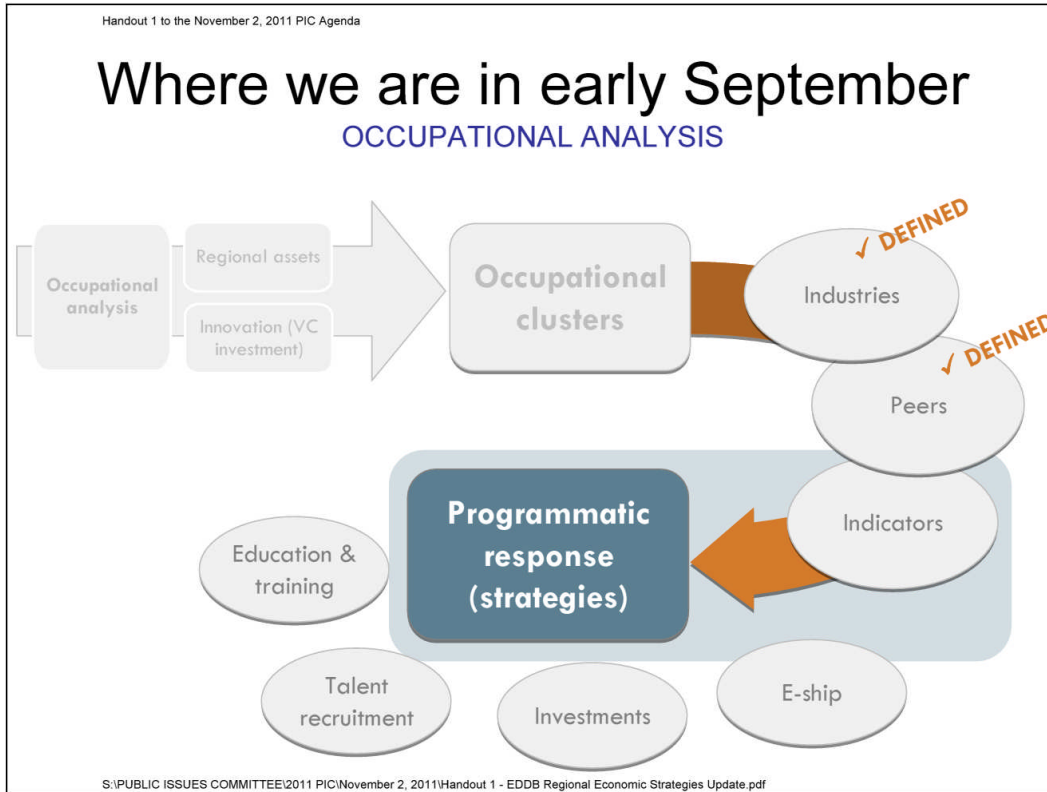
Defining an occupational “short-list”

OCCUPATIONAL ANALYSIS

	Objective	Measure	Weight	Threshold
1	Job quality	Relative median earnings, 2011	40%	≥ 100 of region
2	Critical mass	Employment level, 2011	30%	> 200 jobs
3	Relative advantage	Location quotient, 2011	15%	Above US average (>1.0)
4	Momentum	LQ momentum, 2001-2021	7%	Strengthening over 20-yr cycle
5	Regional outlook	Proj. job growth, 2011-2021	2%	Positive projection 2011-2021
6	Job stability	Job volatility, 2002-2010	2%	Historic job change by percentiles
7	National outlook	Bright outlook	2%	USDOL identified
8	Green job	Green applications	2%	USDOL identified

S:\PUBLIC ISSUES COMMITTEE\2011 PIC\November 2, 2011\Handout 1 - EDDB Regional Economic Strategies Update.pdf





JRC – PIC Meeting of November 2, 2011

Following is a year end update of the work of the JRC over the course of the year. *Please note, we added additional information related to human services and emergency shelter awards at the end of this document.*

Reminder: The Joint Recommendations Committee (JRC) is an inter-jurisdictional body that provides specific funding recommendations and advice on guidelines and procedures for King County and its consortia city partners on a wide range of housing and community development issues. The JRC was created through the interlocal cooperation agreements that formed the King County Community Development Block Grant (CDBG) Consortium, the King County HOME Investment Partnerships (HOME) Consortium and the King County Regional Affordable Housing Program (RAHP) Consortium. King County receives about \$10 to \$12 million of federal funds each year, and about \$3 million each year of RAHP funds.

In 2011, King County and its Consortium Partners won an “Award of Excellence in Affordable Housing” for the YWCA Family Village Project in Issaquah. This project addresses climate change, sustainability, affordable housing and is a model in partnerships.

We should note that the sustainable design of affordable housing projects is considered as part of the application process to ensure that housing will be available for the long term and that it won’t quickly deteriorate or require expensive updates in the near future.

In 2011, Action Items in addition to grant funding included:

- Reviewing previous year CDBG / HOME projects failing timely expenditures, reallocating \$\$ where they became available
- Recommending 2011 CDBG reductions due to decrease in funds in the third year of a 3 year grant cycle
- Amending Consolidated Housing and Community Development Plan related to HUD requirements for resale and recapture provisions in HOME-funded homeownership projects.

2012 Capital Non-Housing Projects were:

Sno-Valley Senior Center
Duvall NE Stella Water Main Project
Duvall ADA Ramp Replacement
Tukwila Minor Home Repair
StartZone Microenterprise
Black Diamond Water Main
Burien Community Center Roof
EADS Facility – Des Moines
North Shorewood Park Play Structure

2012 Project Awards for Affordable Housing; 10 were rental projects; 2 home ownership:

King County Housing Authority - Fairwind Apartments	White Center
Manufactured Housing Community Preservationists - Bonel Manor	Kent
Low Income Housing Institute - Bellevue Apartments (partial award)	Bellevue
Low Income Housing Institute - Copper Lantern	Kenmore
Catholic Housing Services - 4251 Aurora	Seattle
A Regional Coalition for Housing - Kirkland TOD	Kirkland
Multi Service Center - Federal Way Veterans Project	Federal Way
Navos - Cedarstone Apartments	Burien
Providence Health & Services - Providence John Gabriel House	Renton
Friends of Youth - Youth Haven Residence	Kirkland
Parkview Services - Parkview Homeownership 6	King County
Homestead Community Land Trust	

Attachment 3 Continued to the November 2, 2011 PIC Minutes

We have requested more information about the following project:
Downtown Emergency Service Center - Delridge Supportive Housing

Seattle

Human Services and Emergency Shelter Awards

South King County

Emergency Shelters – CDBG and Emergency Shelter Grants

HOME/ARISE – CCS Program – men’s shelter
Reach Out – Catholic Housing Services (CHS) – single adult shelter
Hospitality House – CHS – women’s shelter
Multi-Service Center – family shelter
YWCA – family shelter

Emergency Assistance – CDBG and Emergency Shelter Grants

Des Moines Food Bank – food bank
Housing Justice Project – KC Bar Association
Maple Valley Food Bank

Emergency Shelter – RAHP Funds

Aloha Inn – transitional housing – single adults
St. Martin de Porres – emergency shelter – men
Pioneer Mens – transitional housing – men
Compass Housing Alliance – transitional housing – single adults
Kerner Scott – Women’s emergency shelter
DESC – emergency shelter- single adults
Elizabeth Gregory – transition housing – women
Broadview – emergency domestic violence housing, w/children
Ravenna – transitional housing – young adults
Straley – transitional housing – young adults

North/East

Emergency Shelters – CDBG and Emergency Shelter Grants

Youth Haven – Friends of Youth – youth shelter
Avondale Park – Hopelink – family/single shelter
Kenmore – Hopelink – family shelter

Emergency Assistance – CDBG and Emergency Shelter Grants

Hopelink – eviction prevention
Hopelink – food banks

Emergency Shelter – RAHP Funds

My Sister’s Place – emergency shelter – domestic violence victims
New Ground Bothell – transitional housing – young adults
Avondale Park – emergency shelter – families and single adults
Hopelink Place – transitional housing – families
Family Village – transitional housing – families

Recommended 2012 Regional Appointments

Regional Policy Committee

	Name	City	
Member	Pete Lewis	Auburn	S
Member	Dini Duclos	Federal Way	S
Member	Dwight Thompson	Lk Forest Pk	N
Member	Matt Larson	Snoqualmie	Sno
Alt	Denis Law	Renton	S
Alt	Will Hall	Shoreline	N

Regional Transit Committee

	Name	City	
Member	Jeanne Burbidge	Federal Way	S
Member	Marcie Palmer	Renton	S
Member	Joan McGilton	Burien	S
Member	Dave Hill	Algona	SV
Member	Kimberly Allen	Redmond	N
Member	Bob Sternoff	Kirkland	N
Member	Chris Eggen	Shoreline	N
Member	Fred Butler	Issaquah	N
Alt	Noel Gerken	Maple Valley	S
Alt	Dennis Higgins	Kent	S
Alt	Conrad Lee	Bellevue	N
Alt	Don Gerend	Sammamish	N

Regional Water Quality Committee

	Name	City	
Member	Rich Zwicker	Renton	S
Member	Bill Pelosa	Auburn	S
Member	Doris McConnell	Shoreline	N
Member	Don Davidson	Bellevue	N
Alt	Craig Goodwin	Blk Diamond	SV
Alt	John Wright	Lk Forest Pk	N

PSRC Executive Board

	Name	City	
Member	Pete Lewis	Auburn	S
Member	Dave Hill	Algona	SV
Member	Bob Sternoff	Kirkland	N
Member	Dwight Thompson	Lk Forest Pk	N
Alt	Mia Gregerson	SeaTac	S
Alt	Marlla Mhoon	Covington	S
Alt	John Marchione	Redmond	N
Alt	Will Ibershof	Duvall	Sno

PSRC Operations Committee

	Name	City	
Member	Pete Lewis	Auburn	S
Alt	Bob Sternoff	Kirkland	N

PSRC Growth Mgmt Policy Board

	Name	City	
Member	Terri Briere	Renton	S
Member	Bob Sternoff	Kirkland	N
Member	Hank Margeson	Redmond	N
Alt	Paul Mallery	Algona	SV
Alt	Erin Weaver	Maple Valley	S
Alt	Bernie Talmas	Woodinville	N

PSRC – Transportation Policy Board

	Name	City	
Member	Jeanne Burbidge	Federal Way	S
Member	Dave Hill	Algona	SV
Member	Don Gerend	Sammamish	N
Alt	Rich Zwicker	Renton	S
Alt	Amy Walen	Kirkland	N
Alt	John Marchione	Redmond	N

PSRC– Econ Dev District Board

	Name	City	
Member	Dini Duclos	Federal Way	S
Member	Catherine Stanford	Lk Forest PK	N
Alt	Dennis Higgins	Kent	S
Alt	Bob Hensel	Kenmore	N

King County Growth Management Planning Council (GMPC)

	Name	City	
Member	Rebecca Olness	Blk Diamond	SV
Member	Terri Briere	Renton	S
Member	Layne Barnes	Maple Valley	S
Member	Bob Sternoff	Kirkland	N
Member	Chris Eggen	Shoreline	N
Member	Kimberly Allen	Redmond	N
Alt	Jamie Perry	Kent	S
Alt	Jeanne Burbidge	Federal Way	S
Alt	Amy Ockerlander	Duvall	Sno
Alt	Jeff Glickman	Woodinville	N

Regional Law, Safety and Justice

	Name	City	
Member	Dana Ralph	Kent	S
Member	Verna Seal	Tukwila	S
Member	John Partridge	Auburn	S
Member	Gerard Cattin	Duvall	Sno
Member	Ed Sterner	Lk Forest Pk	N
Member	John Stilin	Redmond	N

Joint Recommendations Committee for CDBG (JRC)

	Name	City	
Member	Pam Fernald	SeaTac	S
Member	Jerry Robison	Burien	S
Member	Ava Frisinger	Issaquah	N
Member	David Baker	Kenmore	N

Local Hazardous Waste Management Program/Management Coordination

	Name	City	
Member	David Baker	Kenmore	N

Board of Health

	Name	City	
Member	Suzette Cooke	Kent	S
Member	Ava Frisinger	Issaquah	N
Alternate	David Baker	Kenmore	N

Recommended 2012 Regional Appointments

enterpriseSeattle

	Name	City	
Member	Rich Zwicker	Renton	S
Member	Jack Dovey	Federal Way	S
Member	Jamie Perry	Kent	S
Member	Erin Weaver	Maple Valley	S
Member	Bob Sternoff	Kirkland	N
Member	Allan Van Ness	Kenmore	N
Member	Will Hall	Shoreline	N
Member	John James	Sammamish	N
Member	John Marchione	Redmond	N

Solid Waste Advisory Committee (SWAC) Executive Appointment

	Name	City	
Member	Joan McGilton	Burien	S
Member	David Baker	Kenmore	N

Domestic Violence Initiative

	Name	City	
Member	Greg Taylor	Renton	S
Member	Verna Seal	Tukwila	S
Member	Doris McConnell	Shoreline	N
Member	Amy Ockerlander	Duvall	Sno

South Central Area Caucus Group

	Name	City	
Member	Craig Goodwin	Blk Diamond	SV
Member	Layne Barnes	Maple Valley	S

King County Flood Control District Advisory Committee

	Name	City	
Member	Marla Mhoon	Covington	S
Member	Bill Thomas	Algona	SV
Member	Bob Lee	Lk Forest Pk	N
Member	Will Ibershof	Duvall	Sno
Alt	Linda Kochmar	Federal Way	S
Alt			S
Alt	Glenn Rogers	Kenmore	N
Alt	Mike Cero	Mercer Is	N

Committee to End Homelessness

	Name	City	
Member	Greg Taylor	Renton	S
Member	Doreen Marchione	Kirkland	N

Emergency Management Advisory Committee (EMAC)

	Name	City	
Member	Karen Ferreira	Burien	S
Member	Gail Harris	Shoreline	N
Member	Gerard Cattin	Duvall	Sno
Alt	Greg Taylor	Renton	S
Alt	Bill Thomas	Algona	SV
Alt	Penny Sweet	Kirkland	N

Radio Executive Policy Committee

	Name	City	
Member	Jack Dovey	Federal Way	S
Member	Allan Van Ness	Kenmore	N